

Mtuft Mini, model TMMS 051

- 8 7 6 5 4 3 2 1

F

E

D

C

B

A

1977.03
1557.16
1372.99
914.50

1525
1708.88

modra

modra

CONTACT:
drawing@modra.com
10 Kallaroo Court, Kallaroo, Western Australia, 6033

FAET NUMBER DESCRIPTION

100457 Mtuft Mini Main Assembly

FINISH MATERIAL

SHEET SCALE REVISION DRAWN STATUS

1 OF 1 1:20 A APPROVED BY Maintenance Change

DATE 7/05/2024

UNLESS OTHERWISE STATED
Do not scale
Dimensions in millimetres
Tolerance to: ISO 2768 F-H
Surface Finish: \sqrt{R} All Over
Remove all sharp edges and
burrs

WEIGHT (g)

A3

THE INFORMATION CONTAINED IN THIS DRAWING IS THE SOLE PROPERTY OF MODRA TECHNOLOGY PTY LTD. ANY REPRODUCTION BY ANY OR ALL A BREACH WITHOUT THE WRITTEN PERMISSION OF MODRA TECHNOLOGY PTY LTD IS PROHIBITED

8 7 6 5 4 3 2 1

Dimensions	Height: 1708.88mm Width: 1977.03mm Depth: 914.50mm
Maximum Sample Width	500mm
Maximum Pile Height	75mm
Compressed Air Requirements	Not required
Power Requirements	USA & Japan – 110v Single Phase 10A Rest of World – 220/240v Single Phase, 5A

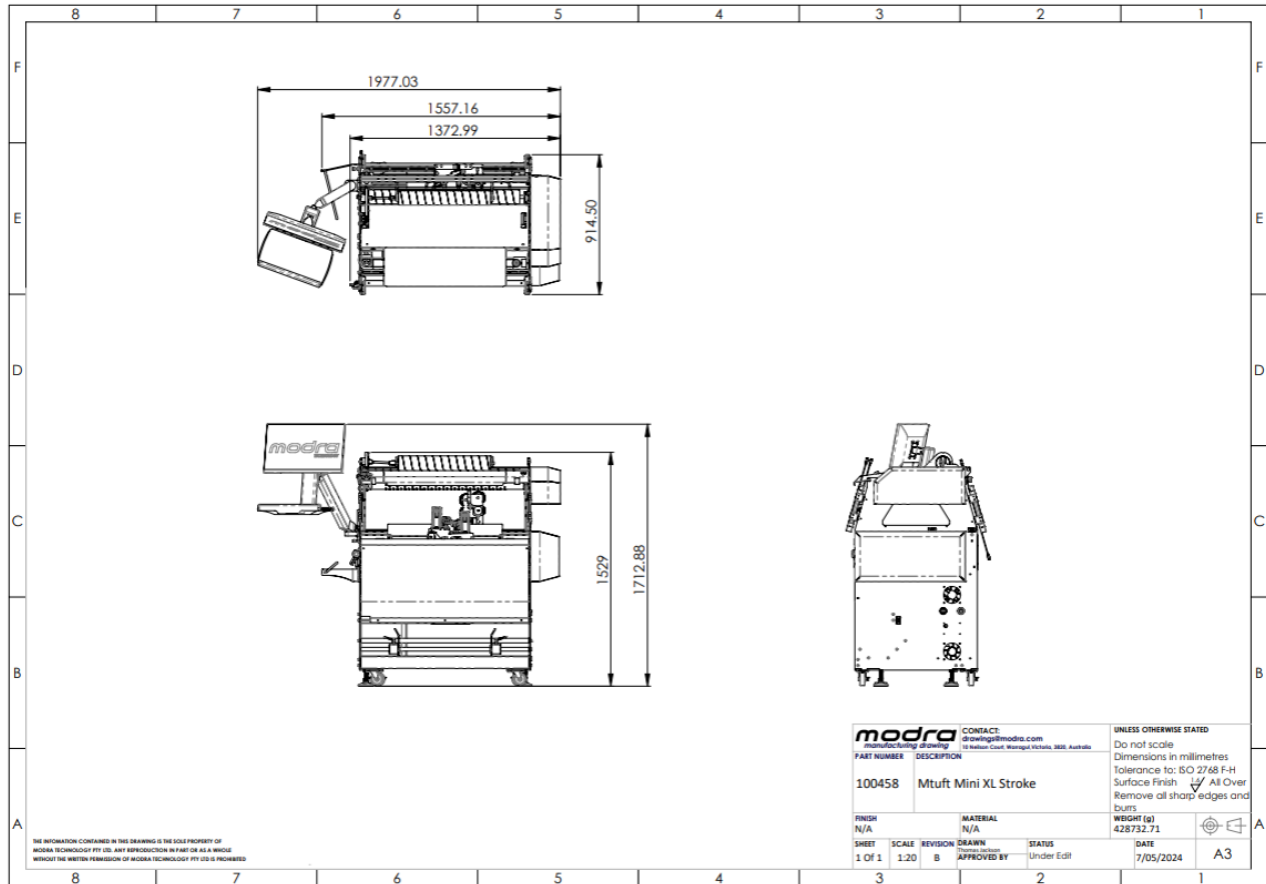
Note:

- Power wiring must include earth
- Machine can be wheeled into position by hand and is set on levelling feet when in position.
- Machine should be installed in an air-conditioned environment (suitable for PC operation).

Machine Layout

Mtuft Mini, model TMMSXL 051

- Maximum pile height 75mm
- Model also available for maximum 20mm pile height



Dimensions	Height: 1712.88mm Width: 1977.03mm Depth: 914.50mm
Maximum Sample Width	500mm
Maximum Pile Height	75mm
Compressed Air Requirements	Not required
Power Requirements	USA & Japan – 110v Single Phase 10A Rest of World – 220/240v Single Phase, 5A

All specifications are subject to change without notice

Note:

- Power wiring must include earth
- Machine can be wheeled into position by hand and is set on levelling feet when in position.
- Machine should be installed in an air-conditioned environment (suitable for PC operation).