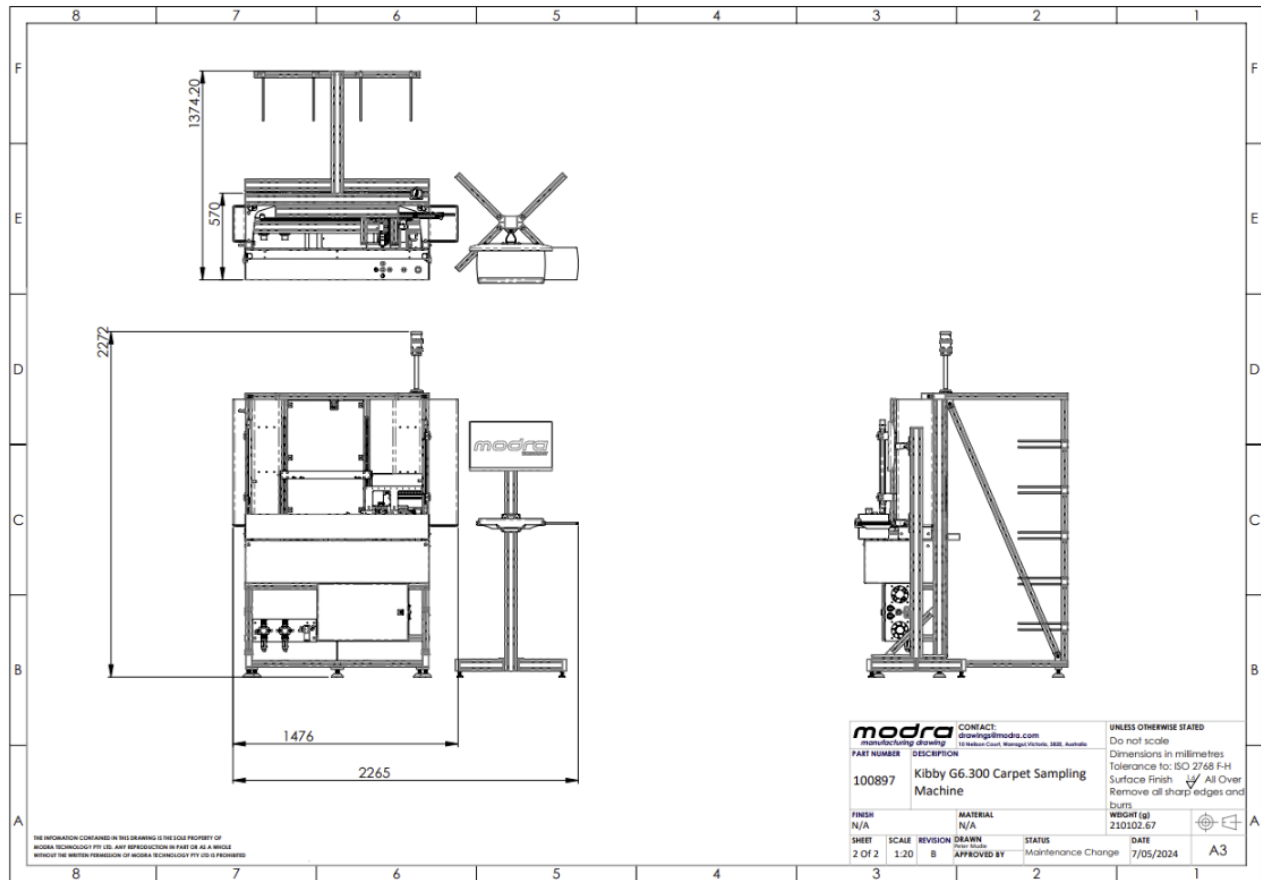


## Machine Layout

### Kibby, model G6.300



Dimensions (with Creel and Operator Screen)	Height: 2272mm Width: 2265mm Depth: 1374mm
Noise Level (at one metre)	73dBa
Compressed Air Requirements	600 lit/min @ 7 bar   21 cfm @ 100 psi
Power Requirements	220 / 240 v Single Phase 10 A

All specifications are subject to change without notice

#### Note:

- Power wiring must include earth.
- Machine can be wheeled into position by hand and is set on levelling feet when in position.
- Machine should be installed in an air-conditioned environment (suitable for PC operation).